

**WARNING!** NOT SUITABLE FOR CHILDREN UNDER 5 YEARS. FOR USE UNDER ADULT SUPERVISION. READ THE INSTRUCTIONS BEFORE USE, FOLLOW THEM AND KEEP THEM FOR REFERENCE.

**▲ WARNING:**

**CHOKING HAZARD – Small parts.**  
Not for Children under 3 years.  
If Your Projects Contain Pins:  
Pins Contain Functional Sharp Points.  
Use Only Under Adult Supervision.

## SAFETY MESSAGES FOR USE OF PLASTER POWDER

**Plaster moulding kits are considered chemical toys in the European Union.**  
**Please read through the following precautions and instructions before you start.**

### PLASTER POWDER

The plaster powder provided in this kit is a kind of calcium sulphate. The material is safe for intended use. However, it is recommended that you wash your hands after the project is done. If you have any known skin allergies, you should first seek your physician's advice before using the kit. In case of any accidental ingestion, consult a physician. Please call your local health centre or our product distributor as listed in our package for further information.

### FIRST AID INFORMATION

If swallowed: Wash out mouth with water, drink some fresh water. DO NOT INDUCE VOMITING. Seek immediate medical advice. If in doubt, seek medical advice without delay. Take the chemical and /or product together with the container with you. In case of injury, always seek medical advice. In case of eye contact; wash out eye with plenty of water, holding eye open. Seek immediate medical advice.

### ADVICE FOR ADULT SUPERVISION

- This chemical toy is for use only for children over the age of 5 years. Read and follow these instructions, the safety rules and the first aid information and keep them for reference. Incorrect use of plaster can cause injury and damage to health. Only carry out those activities which are listed in the instructions. Because children's abilities vary, even within age groups, supervising adults should exercise discretion as to which activities are suitable for a particular child. The supervising adult should discuss the warnings, safety information and the possible hazards with the child or children before commencing the activities.
- The area surrounding the activity should be kept clear of any obstructions and away from food storage. It should be well lit, ventilated and close to a water supply. The working area should be cleaned immediately after carrying out the activity. Particular attention should be paid to the safe handling of the alkalis and acids. A solid table with a heat resistant top should be used.

### SAFETY RULES

- Keep children under the specified age limit and animals away from the activity area.
- Store the kit out of reach of young children.
- Wash hands after carrying out activities. Clean all equipment after use.
- Do not use any equipment which has not been supplied with the set or recommended in the instructions for use.
- Do not eat, drink or smoke in the activity area.
- Plaster dust may irritate the eyes, nose and throat. Do not place the material in the mouth. Do not inhale dust or powder. Do not apply to the body. Avoid contact with eyes.

In case of accidental ingestion, please contact your local hospital or our central office for first aid information. You may also wish to keep the following distributor contact information for further reference:

**Australia** - Johnco Productions Pty Ltd, 4/191 Allambie Rd, Frenchs Forest, NSW 2086, Sydney, Australia. Email: info@johncoproductions.com (Tel: 61-2-94525819). **Canada** - Playwell Enterprises Limited. 921 Progress Avenue, Unit 19. Scarborough, Ontario M1G 3V4. Canada. Email: pelca@rogers.com. Tel: 1-416-439-0044. **Malaysia** - Elite Toys (M) Sdn Bhd. No. 9, Jalan 6/118c, Desa Tun Razak, Cheras 56000, Kuala Lumpur, Malaysia. Email: info@elite-toys.com. Tel: 603-9171 8830. **New Zealand** - Leisure Dynamics (NZ) Ltd., 386 Rosebank Road, Avondale, Auckland 7, New Zealand. Email: ldsales@holdson.co.nz. Tel: 64-9-8287159. **Singapore** - Lancashire Marketing PTE Ltd. Blk 3016, Ubi Road 1, #03-145, Singapore 408706. Email: info@lancashire-toys.com.sg Tel: 65-6743 1184. **United Kingdom** - Great Gizmos Limited, Barlow House, Crompton Fields, Crawley, RH10 9QB, UK. Email: enquiries@greatgizmos.co.uk. Tel: 44-1293-543221. **United States** - Toymsmith. 3101 West Valley HWY East, Sumner, WA 98390, USA. Email: info@toymsmith.com. Tel: 800-356-0474. **Belgium** - Dam Bvba. Ijzerenweglei 17, B-2640 Morstel, Belgium. Email: info@dam.be. Tel: 32-34498811.

### OTHER REMARKS ABOUT PLASTER POWDER

Before you start mixing the plaster, please note the following:

Plaster powder starts to harden once it is mixed with water. It is a gradual process in which the viscosity of the mixture will slowly reduce until it becomes hard. Always monitor the condition of the plaster when mixing. Perform the moulding when the mixture is like a smooth-paste. This is approximately 3 - 5 minutes after mixing with water. If it starts to develop into a "lump", it will be hard to use it for moulding. It is recommended that the mixing and moulding steps as described on the back should be completed within 5 - 10 minutes.

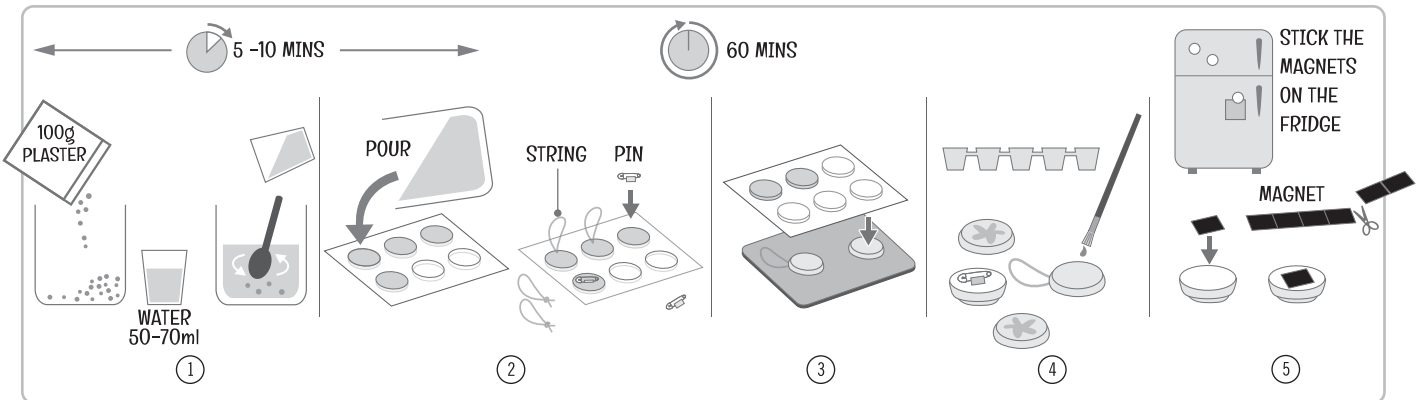
Dispose of the remaining plaster properly. Do not pour the powder down the sink or bathtub as it may clog the drain. Wash the utensils used for mixing the plaster under running water.

### QUESTIONS & COMMENTS

We treasure you as a customer and your satisfaction with this product is important to us. If you have any comments or questions, or you find any parts of this kit missing or defective, please do not hesitate to contact our distributor in your country, at the address printed on the package. You are also welcome to contact our marketing support team at Email: infodesk@4M-IND.com, Fax (852) 25911566, Tel (852) 28936241, Web site: WWW.4M-IND.COM

# MOULD AND PAINT INSTRUCTIONS

Read the safety instructions on the other side of this instructions before you start. These are standard instructions to be shared by all 4Mould&Paint™ projects. Due to minor variations of the projects' contents, some descriptions below may not be applicable to your projects.



## 1. MIXING THE PLASTER

Your project may contain more than one bag of plaster powder (100g/3.5oz). The following instructions are for mixing ONE bag of plaster at a time. Prepare a mixing bowl with a smooth inside surface, a stirrer and a glass of water of approximately 50-70ml (1.7-2.4fl oz). Cut open the bag of plaster powder and pour it into the mixing bowl. Start adding water. Watch the condition of the plaster paste and add the water bit by bit. Do not pour too much water in at once as that may make the plaster mixture too runny for moulding. Stir the mixture gently while you are pouring the water. Depending on the conditions, a bag of plaster (100g) will normally become a smooth paste after approximately 50-70ml water is mixed with it. Be reminded again not to stir the plaster for too long as it will start to set once water is mixed with it.

## 2. MOULDING

Place the mould on a level surface. Pour the plaster mixture into the cavities. Gently agitate the mould to get rid of any air bubbles. If your plaster mixture is mixed from one bag of plaster as instructed above, you may not be able to fill in all cavities. Just leave those unfilled for the next bag of plaster moulding. There is sufficient plaster to finish the project.

- IF PINS ARE INCLUDED IN YOUR KIT: Gently place the pins onto the plaster mixture.
- IF STRING IS INCLUDED IN YOUR KIT FOR HANGING: Cut a 15 cm (6-inch) length of string, and tie the ends together with a double knot. Gently place the string onto the plaster mixture, making sure the knot is covered with plaster.

## 3. LEAVE THE PLASTER TO SET

This will take approximately 60 minutes and will release some warmth at room temperature. Prepare a piece of soft cloth on the table. Once the plaster has fully hardened, gently press the mould from behind so the hardened plaster releases onto the cloth prepared.

## 4. PAINTING AND DECORATION

You may start painting the hardened plaster when it is still moist. However, for best results, it is recommended you wait until the plaster is completely dry. Use your own colour scheme or refer to the illustrations as shown on the package for ideas. Follow the colour mixing guide below to produce more colours. Some of the following guides may not apply to your kit if the required colours are not included.

Green	=	Yellow	+	Blue		Pink	=	White	+	Red				
Orange	=	Yellow	+	Red		Sky Blue	=	White	+	Blue				
Purple	=	Blue	+	Red		Lime Green	=	Yellow	+	a little Blue				
Turquoise	=	Blue	+	White	+	a little Yellow		Brown	=	Yellow	+	Red	+	a little Black

- IF GLOW PAINT IS INCLUDED IN YOUR KIT: After the moulded pieces have been painted with the original colours, highlight some details with the glow paint. The details will glow in the dark like magic. Expose your creation to room light or torch light for a minute. Turn off the light and watch them glow like magic!
- IF GLITTER IS INCLUDED IN YOUR KIT: Simply sprinkle the glitter onto the painted pieces before the paint is dry.

## 5. APPLYING MAGNETS (IF THEY ARE INCLUDED IN YOUR KIT)

Wait until the plaster has fully hardened and is completely dry. The magnet may not stick firmly on a moist surface. Check if the back is smooth. If not, ask an adult to polish the back with sand paper. Cut the magnet strip into pieces, approximately 18mm x 25mm in size. Peel off the backing and stick firmly onto the back of the hardened plaster.